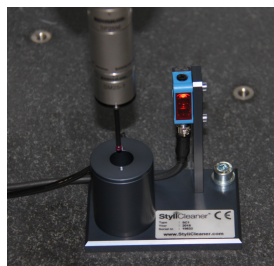
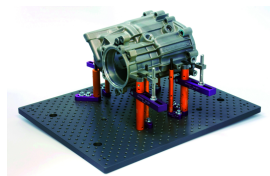
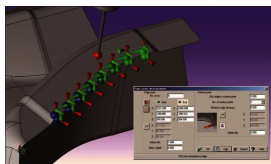
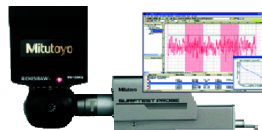
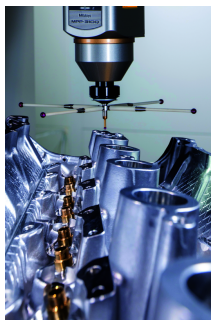
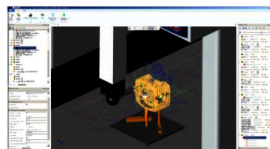
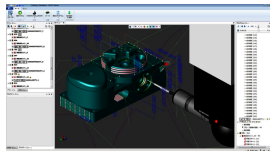
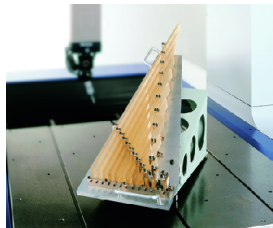




CNC CMM, LEGEX 574

Premium Accuracy, 500 x 700 x 400 mm

Item number: 356-403-10



Description

The LEGEX Series is an ultra-high precision CNC coordinate measuring machine with the world's highest level of accuracy. This is made possible by rigorous analysis of all possible error producing factors and the elimination or minimization of their effects. The fixed bridge structure and precision air bearings running on highly rigged guideways ensure superior motion stability and ultra-high geometrical accuracy. Due the "Center of gravity" placed drive systems of the sliders we reached the best possible dynamic performance. In addition, other various technologies have been utilized in the structure of the drive unit, measuring against vibration etc. to provide ultra-high accuracy. Using FEM structure analysis simulations, guarantee geometric motion accuracy that has minimal errors from fluctuations in the load and other variables. In addition, other various technologies have been utilized in the structure of the drive unit, measuring against vibration etc. to provide ultra-high accuracy. The construction is designed for thermal stability, low expansion crystallized glass scales and temperature compensation, results in an accuracy temperature range of 18 °C to 22°C. This will be helping you reduce measurement environment maintenance costs. The high standard of the design and technology will give you an ultra-high accurate Coordinate Measuring Machine

Features

The LEGEX Series offers you the following benefits:


- Rigorous analysis of all possible error-producing factors, and elimination or minimization of their effects, delivers unsurpassed accuracy of 0.28µm
- Ultra-high accuracy crystallized-glass scale with the ultra-low expansion coefficient of 0.01x10-6/K is used on each axis
- The fixed bridge structure and precision air bearings, running on highly rigid guideways, give you superior motion stability and ultra-high geometrical accuracy
- You can use many different types of optional probe systems, including touch-trigger probes, laser scanning probes, and a vision measuring probe.

Features

Model:	574
Range:	500 x 700 x 450 mm
Loading	250 kg
Weight:	
Mass:	3500 kg
Power supply report:	UN 38.3 Test Summary Report

Spare parts

Consumable spares:



CR2450/G1AK
button battery
BD042